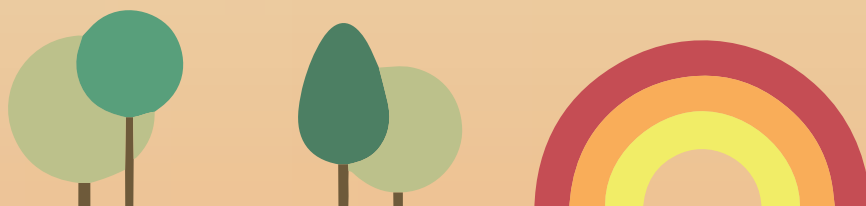




# MathemaTIC

## PERSONALIZED LEARNING ENVIRONMENT IN MATHEMATICS

For Every Learner



# PERSONALIZED LEARNING

Students interact with research-backed, engaging resources that are tailored to their needs and aligned to the learning outcomes as per the curriculum.

# DIFFERENTIATED INSTRUCTION

Diverse resources enable the tailored instruction of mathematics for students resulting in an increase in engagement and motivational levels while achieving common goals.

# ACTIONABLE DATA

MathemaTIC provides teachers and students with real-time academic progress through actionable data. The dashboards allow them to view feedback that directly aligns students' needs with learning outcomes.



# PARTNERS

# FEATURES



## Aligned to the Curriculum

The mathematical items are tightly aligned to the curriculum and its objectives. This alignment is represented on an interactive curriculum framework that provides teachers with the ability to monitor each student's progress through the learning resources, their areas of strengths and their areas of weaknesses. It also provides students with a clear understanding on how their knowledge is in line with the national educational objectives and standards.



## Multilingual

With a focus on problem solving skills rather than pure computational skills, the mathematical items have been carefully developed in four languages: German, French, Portuguese and English. This enables students to understand and work through problems in their own language. The system can also be switched between languages (while working on an item) to enable students to understand the problem in a language other than the language of instruction. It also helps parents assist their children through the learning process.



## Adaptive

Through a unique multi-adaptive process, MathemaTIC first calibrates to student's learning capabilities through diagnostic exercises. Then as students work through the mathematical items that are linked to the curriculum framework, they are provided with adaptive scaffolding to activate prior knowledge by using several learning strategies that lead to adaptive help-seeking. This process has proven to improve students' problem solving skills and inform the design of mathematical items for greater efficiency.



## Intuitive Dashboards

The MathemaTIC dashboard provides teachers with user-friendly, intuitive visualizations of the data that is gathered from students' activities using the mathematical items. As the items are mapped to not only topics but also to the curriculum, teachers can gauge how the entire class is doing against the curriculum objectives to improve and enhance instructional methodologies. Teachers can also drill down into individual student progress to identify the causes for weakness in performance on specific items or modules.